



MASTERHITCH

E U R O P E L T D

"The Safest
Quick Hitch in
The World"



THE HOOKER HITCH



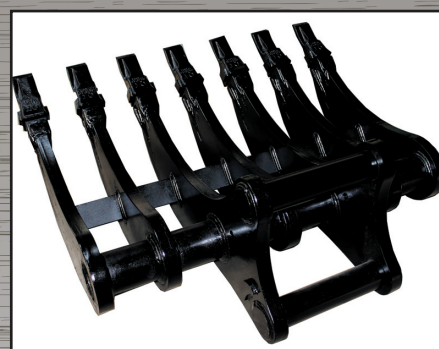
BUCKETS

"The toughest range,
built to last"



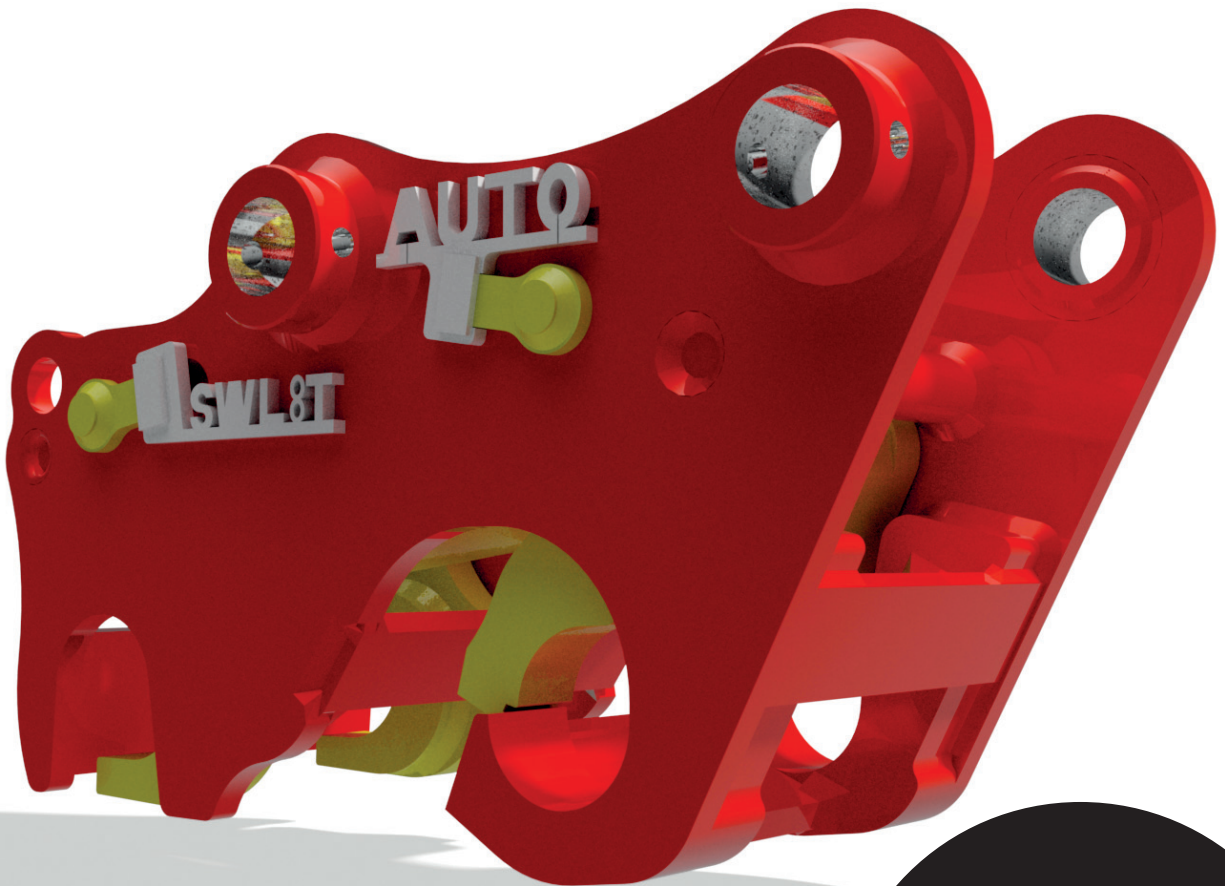
RAM GUARDS

"Unbreakable"



ATTACHMENTS

"A full range,
for every need"



“The Safest
Quick Hitch in
The World”

MASTERHITCH Company Overview

Operating from a 70,000 sq. ft factory in North Kent, Masterhitch supplies contractors, Original Equipment Manufacturers and distributors throughout the UK and Europe.

Masterhitch use the latest state of the art manufacturing equipment including robotic welders, plasma cutters and the latest 3D CAD software packages to optimise and deliver every product, from the standard excavator bucket to bespoke, customised designs.

Masterhitch employs a highly trained and motivated team that ensures all products are of the highest quality, exceeding customer's expectations on every order and working to the tightest deadlines.

Masterhitch manufactures the safest quick hitch system on the market. The Masterhitch “Hooker” is a patented design that ensures absolute safety and full compliance with all the latest and anticipated European standards.

The Masterhitch “Hooker” is complemented with a full range of buckets, attachments, accessories and wear parts to suit every customer's needs.

A bespoke design service is also available for one off items as well as to manufacture items to individual customer's specifications.

MASTERHITCH

Hooker System

The unique Masterhitch fully automatic quick hitch system allows the operator to change buckets or attachments in minimal time from the safety of their cab.

The exclusive safety features of the fully automatic Masterhitch "Hooker" make it impossible for the bucket or attachment to become detached from the machine unless it is resting on the ground.

- Continual in-cab audible warning whilst the bucket/attachment changeover switch is engaged.
- Additional visible check from the cab, so the operator can see if the system is in the locked or unlocked position.
- Unique internal high capacity spring within the hydraulic ram of the Hooker helps make this hitch the safest on the market.
- Certified lifting points on the Hooker Hitch.

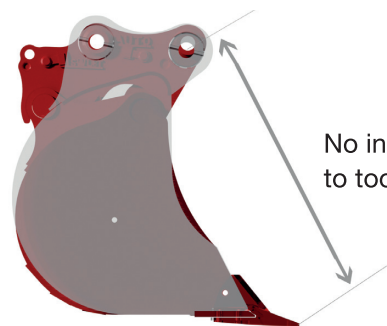
The Hooker Hitch is fully CE compliant and complies with the latest international standards for quick hitches. The Masterhitch Hooker is fabricated using only high quality British steel. It has been designed for working in the toughest environments, and with all bearings sealed and lubricated for life, only minimum levels of maintenance are required.

Should the need arise to replace any part of the hitch, Masterhitch maintain a constant stock with all parts able to be sent out for next day delivery to keep any downtime to the absolute minimum.

A full product backup service is always available at Masterhitch.

Maintaining Original Geometry

The Masterhitch automatic quick hitch and buckets are purpose made to fit the geometry of the machine and original bucket to which it is fitted. No other quick hitch can comply with this.



"The Safest Hitch up in seconds!"



Masterhitch Quick Hitch Range

Fully Automatic Hooker Hitch Range:

- MH04 for machines from 2.5-4 tonnes.
- MH08 for machines from 5-9 tonnes.
- MH15 for machines from 10-17 tonnes.
- MH22 for machines from 18-25 tonnes.
- MH35 for machines from 26-39 tonnes.
- MH45 for machines from 40-50 tonnes.

Manual Hooker Hitches:

- MN04 for machines from 2.5-4 tonnes.
- MN08 for machines from 5-9 tonnes.

All Masterhitch quick hitches are only compatible with the full range of Masterhitch buckets and attachments.

The Hooker Hitch meets the following standards:

- BS EN 474-1:2006+A4:2013
- EN 474-1:2006+A4:2013(E)



MASTERHITCH

Buckets

Durable and of the highest quality, all Masterhitch products are manufactured to the highest standard and carry a **“satisfaction or your money back”** guarantee.

Adaptability

- The buckets can be fitted to the Masterhitch quick hitch system facing in either direction.
- Rock, Tilting and Trapezoidal buckets are available for specialist, groundbreaking work.



Durability

- Additional reinforcement is added to all high stress and wear areas.

Quality

- Buckets are fabricated from high quality British steel to ensure maximum performance and longevity.
- Each Bucket is manufactured using Oxy fuel profilers, plasma cutters and robotic welders, guaranteeing buckets of the highest quality.

Machine Weight		2.5-4 tonne	5-9 tonne	10-17 tonne	18-25 tonne	26-39 tonne	40-50 tonne
Hitch Type		MN 04/MH 04	MH 08/MH 08	MH 15	MH 22	MH 35	MH 45
		Manual/Automatic	Manual/Automatic	Automatic	Automatic	Automatic	Automatic
Digging Bucket (Width)		9" - 225mm	9" - 225mm	18" - 450mm	24" - 600mm	24" - 600mm	24" - 600mm
		12" - 300mm	12" - 300mm	24" - 600mm	30" - 750mm	30" - 750mm	30" - 750mm
		18" - 450mm	18" - 450mm	30" - 750mm	36" - 900mm	36" - 900mm	36" - 900mm
		24" - 600mm	24" - 600mm	36" - 900mm	42" - 1050mm	42" - 1050mm	42" - 1050mm
		30" - 750mm	30" - 750mm	42" - 1050mm	48" - 1200mm	48" - 1200mm	48" - 1200mm
			36" - 900mm	48" - 1200mm	54" - 1350mm	54" - 1350mm	54" - 1350mm
					60" - 1500mm	60" - 1500mm	60" - 1500mm
						72" - 1800mm	72" - 1800mm
Ditch Bucket	Std.	39" - 1000mm	60" - 1500mm	72" - 1800mm	72" - 1800mm	72" - 1800mm	72" - 1800mm
	Light Duty	48" - 1200mm	72" - 1800mm	84" - 2100mm	84" - 2100mm	84" - 2100mm	84" - 2100mm

Standard Pin Buckets

- Masterhitch manufacture a range of standard pin buckets to fit most machines.
- Standard Pin Buckets are available in all sizes shown above, and are also available in Tilting and Trapezoidal Buckets.
- All standard pin buckets are made to the same exacting standard as Masterhitch buckets.



“Tough, Safe
and built
to Last”

MASTERHITCH

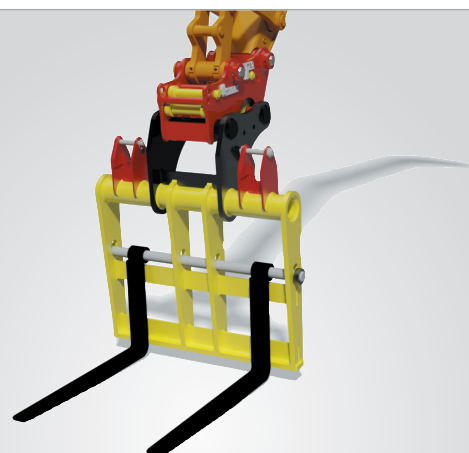
Attachments



Power Rake

The Masterhitch Power Rake is tough enough to stand up to the task of all land clearing jobs.

- Available for 3-45 tonne machines.



Reversible Excavator Forks

Masterhitch adjustable reversible forks, are ideal for getting pallets, beams and other materials to the most inaccessible places.

- Masterhitch adjustable reversible pallet forks can be used on excavators from 10-25 tonnes.
- Saves costs where a full time forklift may not be justifiable.



Grapples

Ideal for demolition and clearance work, as well as forestry and material sorting.

- Available for 5-45 tonne machines.

"A Full
Range of
Attachments
for Every
Need"



Rippers

The Masterhitch Ripper attachment is for those occasions when hard ground or rock needs to be broken up, suitable for tarmac, concrete, rock and earth.

- Available for 5-45 tonne machines.

MASTERHITCH

Attachments



Master Thumb Grab

Suitable for re-handling of site waste materials including wood, rubber, metal and paper.

- Master Claw is made in 3 different sizes for 7, 14 and 21 tonne machines.
- Fits the Masterhitch Hooker Hitch. Also available for standard pin mounting.
- Can be used with buckets or other attachments (shown above).



Riddle Bucket - Heavy Duty

Made for sorting of different size materials.

- The Masterhitch Riddle buckets can be made in sizes to fit 7, 14, 21 or 30 tonne machines.
- Fits the Masterhitch Hooker hitch. Also available for standard pin mounting.



Breaker Cradles & Attachment Plates

Masterhitch manufacture a complete range of attachment cradles for all makes of equipment.

- For machines from 1 tonne to 50 tonnes.
- Cradles can be made to fit the Masterhitch Hooker hitch or for standard pin mounting.
- Available for most types of breakers and attachments.



MASTERHITCH

Ram Guards

Rams are expensive to repair and can be the cause of lost time on contracts and hire periods.

With the Masterhitch Ram Guard fitted to your machine the risk of damage to rams is dramatically reduced along with the consequential lost production and down time.

- Can be manufactured to fit all popular machine rams.
- Range of sizes to suit machines from 1 tonne to 60 tonnes.
- Simple fitting to machines.
- Weld on or bolt on.
- Does not invalidate machine warranties.
- Heavy fabrication gives great strength and resistance to impact.
- Ram Guards can be fitted by any competent fitter using the installation instructions supplied.
- Can be painted to the customer's specification or supplied in base coat finish.

Please download the Ram Guard sizing sheet at www.masterhitch.co.uk and email to sales@masterhitch.co.uk with your requirements for a prompt quote.



The
"Unbreakable"
Ram Guard!





MASTERHITCH

At Masterhitch we have a skilled design team capable of producing detailed CAD drawings and engineering calculations for a whole range of bespoke products, for use with all types of construction and other machinery.

From a client's initial rough sketch, through to design and manufacture, Masterhitch can produce those things you cannot get elsewhere.

Once a design has been agreed and an order placed, Masterhitch will produce working and fabrication drawings for client approval, prior to manufacture commencing.

Bespoke products can be finished in colours to suit individual clients' own schemes.

Masterhitch have manufactured all the rides for the Diggerland Adventure Parks both in the UK and the USA.

Call or email the Masterhitch sales team for a quote on that add-on that you thought you could not get!

"If You Want It,
We Can
Make It"



MASTERHITCH EUROPE LTD

THE WHITEWALL CENTRE, WHITEWALL ROAD, STROOD, KENT ME2 4DZ

T: 01634 290022 E: sales@masterhitch.co.uk W: www.masterhitch.co.uk